

U R B A N
Bonfire[™]
U R B A I N

CLASSICS



Fall 2020

Urban Bonfire[™] **CLASSICS**

Urban Bonfire's Classics program offers a curation of our most popular configurations, colors and best selling products. Every kitchen includes a professional Dekton[®] Countertop template and is compatible with a number of industry leading outdoor grill and appliance brands.



Anatomy of the Urban Bonfire Outdoor Cabinetry System

The Urban Bonfire Outdoor Cabinetry System is designed and engineered to ensure quality, longevity and ease of implementation.



Door Catch

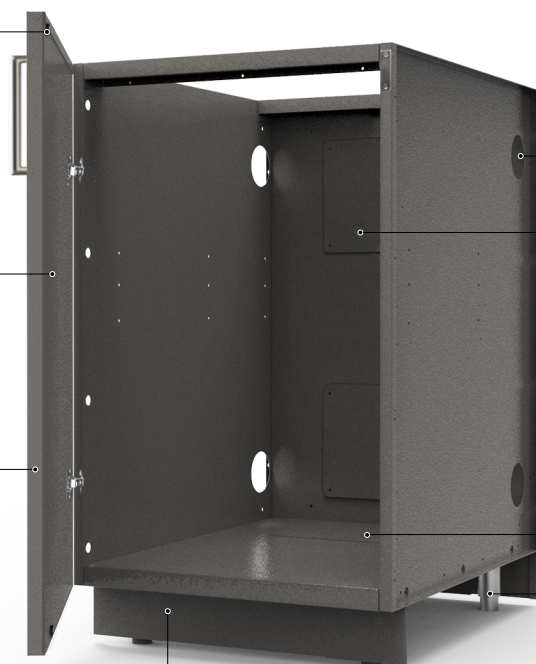
Discrete, high strength magnetic catch system.

Rigid Door

Dual panel door structure with sound insulated core.

Cabinet Composition

- Thick gauge, marine grade aluminum
- Super durable powder coating (interior and exterior)
- All non-combustible materials



Self-Leveling Toe Kick

Adapts to slope and other site conditions.

Engineered for Efficient Installation

Cabinet to cabinet conduits designed to easily pass services.

Multiple Removable Panels for Simple Connections to Outside Services (plumbing, gas & electrical)

Easily remove these panels to gain access to outside services.

All Outdoor-Grade 304 Stainless Steel Hardware:

- Adjustable commercial-grade leveling legs
- Pulls
- Hinges
- Door slides
- Handles

Powder Coating Finishes

Our custom formulated “Super Durable” finishes add depth to the colors and resistance to fingerprints and stains.



Anthracite

Modern dark gray with slate undertones. Elevates contemporary and outdoor urban environments.



Clay

An elegant and versatile rich beige. Enhances the mood and atmosphere of any classic outdoor living space.

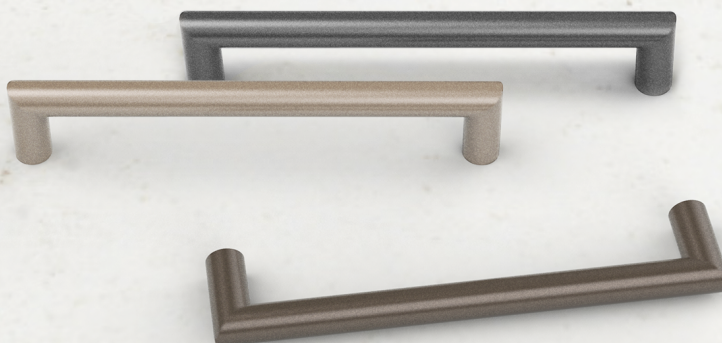


Pewter

Warm dark gray with bronze undertones. Adds a refined touch to any outdoor environment.

Powder Coated Handles

Each cabinet includes our fully powder coated, matching, outdoor-grade 304 stainless steel handles.



S-SIERRA36



Shown in Clay with Dekton® Nilium (2cm) with Aspire by Hestan equipment.

Specifications

Dimensions

*Length **87"**
Depth **28 3/4"**
Height **36 1/2" ± 1"**

*Includes 3/4" countertop nosing. See specifications for details.

- 1 2x Utility Cabinet (21")**
Universal track system. See accessories on page 17 for customization options.
- 2 36" Grill**
Grill and equipment sold separately. See brand and model compatibility chart on page 18 for details.
- 3 Grill Base Cabinet**
For integration with a 36" Grill.
- 4 Dekton® Countertop Template**
Does not include countertop material, fabrication or installation.

Every kitchen design includes

- Thick Marine Grade Aluminum Construction
- Full Interior & Exterior Powder Coating
- 304 Grade Outdoor Stainless Steel Hardware
- Integrated Self-Leveling Toe Kick
- Removable Access Panels for Simple Connections to Outside Services (plumbing, gas & electrical)
- Rigid Door Structure with Sound Insulated Core & Magnetic Catch System

Looking for something else?
See highlights of our Custom Offerings on pages 21-22.

Customization

Finishes

Thick Gauge Marine Grade Aluminum with Interior and Exterior Powder Coating. Matching Powder Coated 304 Stainless Steel Handles.



Aesthetic Back Panels

For Installations where the Back of the Kitchen will be Visible. If the kitchen is to be placed against a wall or fence, or will be otherwise hidden from view, aesthetic back panels are unnecessary.

☐ **Back panels** (S-SIERRA36-BCKP)

Powder Coated Accessories

Easy to add or move within any utility cabinet.



Drawer (S-DR)
Heavy duty retractable drawer. Up to three (3) per utility cabinet.

- 1 Drawer (S-DR-1)
- 2 Drawers (S-DR-2)
- 3 Drawers (S-DR-3)



Shelf (S-SHELF)
Adjustable height shelf. Up to two (2) shelves per utility cabinet.

- 1 Shelf (S-SHELF-1)
- 2 Shelves (S-SHELF-2)



Refuse (S-GBG)
Retractable refuse and recycling kit (shown with drawer DR-21).

- 1 Refuse (S-GBG)
- 1 Drawer & 1 Refuse (S-DR-GBG)

Countertop and equipment shown for aesthetic purposes only. Not included in quote. Images digitally rendered. Actual products may vary.

S-SIERRA42



Shown in Pewter with Dekton® Fossil (2cm) and Hestan Outdoor equipment.

Specifications

Dimensions

*Length **93"**
Depth **28 3/4"**
Height **36 1/2" ± 1"**

*Includes 3/4" countertop nosing. See specifications for details.

- 1 2x Utility Cabinet (21")**
Universal track system. See accessories on page 17 for customization options.
- 2 42" Grill**
Grill and equipment sold separately. See brand and model compatibility chart on page 18 for details.
- 3 Grill Base Cabinet**
For integration with a 42" Grill.
- 4 Dekton® Countertop Template**
Does not include countertop material, fabrication or installation.

Every kitchen design includes

- Thick Marine Grade Aluminum Construction
- Full Interior & Exterior Powder Coating
- 304 Grade Outdoor Stainless Steel Hardware
- Integrated Self-Leveling Toe Kick
- Removable Access Panels for Simple Connections to Outside Services (plumbing, gas & electrical)
- Rigid Door Structure with Sound Insulated Core & Magnetic Catch System

Looking for something else?

See highlights of our Custom Offerings on pages 21-22.

Customization

Finishes

Thick Gauge Marine Grade Aluminum with Interior and Exterior Powder Coating. Matching Powder Coated 304 Stainless Steel Handles.



Anthracite



Clay



Pewter

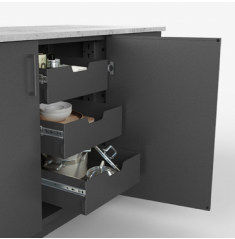
Aesthetic Back Panels

For Installations where the Back of the Kitchen will be Visible. If the kitchen is to be placed against a wall or fence, or will be otherwise hidden from view, aesthetic back panels are unnecessary.

Back panels (S-SIERRA42-BCKP)

Powder Coated Accessories

Easy to add or move within any utility cabinet.



Drawer (S-DR)

Heavy duty retractable drawer. Up to three (3) per utility cabinet.

- 1 Drawer (S-DR-1)
- 2 Drawers (S-DR-2)
- 3 Drawers (S-DR-3)



Shelf (S-SHELF)

Adjustable height shelf. Up to two (2) shelves per utility cabinet.

- 1 Shelf (S-SHELF-1)
- 2 Shelves (S-SHELF-2)



Refuse (S-GBG)

Retractable refuse and recycling kit (shown with drawer DR-21).

- 1 Refuse (S-GBG)
- 1 Drawer & 1 Refuse (S-DR-GBG)

Countertop and equipment shown for aesthetic purposes only. Not included in quote. Images digitally rendered. Actual products may vary.

S-HORIZON36



Shown in Anthracite with Dekton® Vera (2cm) and Sedona by Lynx equipment.

Specifications

Dimensions

*Length 111"
Depth 28 3/4"
Height 36 1/2" ± 1"

*Includes 3/4" countertop nosing. See specifications for details.

- 1 **2x Utility Cabinet (21")**
Universal track system. See accessories on page 17 for customization options.
- 2 **36" Grill**
Grill and equipment sold separately. See brand and model compatibility chart on page 18 for details.
- 3 **Grill Base Cabinet**
For integration with a 36" Grill.
- 4 **24" Refrigerator**
- 5 **Dekton® Countertop Template**
Does not include countertop material, fabrication or installation.

Every kitchen design includes

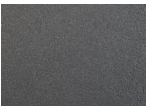
- Thick Marine Grade Aluminum Construction
- Full Interior & Exterior Powder Coating
- 304 Grade Outdoor Stainless Steel Hardware
- Integrated Self-Leveling Toe Kick
- Removable Access Panels for Simple Connections to Outside Services (plumbing, gas & electrical)
- Rigid Door Structure with Sound Insulated Core & Magnetic Catch System

Looking for something else?
See highlights of our Custom Offerings on pages 21-22.

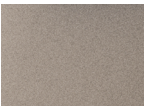
Customization

Finishes

Thick Gauge Marine Grade Aluminum with Interior and Exterior Powder Coating. Matching Powder Coated 304 Stainless Steel Handles.



Anthracite



Clay



Pewter

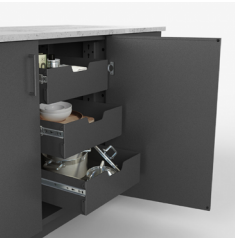
Aesthetic Back Panels

For Installations where the Back of the Kitchen will be Visible. If the kitchen is to be placed against a wall or fence, or will be otherwise hidden from view, aesthetic back panels are unnecessary.

Back panels (S-HORIZON36-BCKP)

Powder Coated Accessories

Easy to add or move within any utility cabinet.



Drawer (S-DR)

Heavy duty retractable drawer. Up to three (3) per utility cabinet.

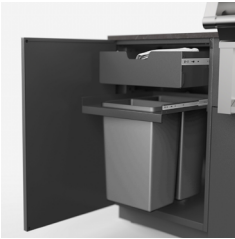
- 1 Drawer (S-DR-1)
- 2 Drawers (S-DR-2)
- 3 Drawers (S-DR-3)



Shelf (S-SHELF)

Adjustable height shelf. Up to two (2) shelves per utility cabinet.

- 1 Shelf (S-SHELF-1)
- 2 Shelves (S-SHELF-2)



Refuse (S-GBG)

Retractable refuse and recycling kit (shown with drawer DR-21).

- 1 Refuse (S-GBG)
- 1 Drawer & 1 Refuse (S-DR-GBG)

Countertop and equipment shown for aesthetic purposes only. Not included in quote. Images digitally rendered. Actual products may vary.

S-HORIZON42



Shown in Clay with Dekton® Nilium (2cm) and Lynx Professional equipment.

Specifications

Dimensions

*Length **117"**
Depth **28 3/4"**
Height **36 1/2" ± 1"**

*Includes 3/4" countertop nosing. See specifications for details.

- 1 2x Utility Cabinet (21")**
Universal track system. See accessories on page 17 for customization options.
- 2 42" Grill**
Grill and equipment sold separately. See brand and model compatibility chart on page 18 for details.
- 3 Grill Base Cabinet**
For integration with a 42" Grill.
- 4 24" Refrigerator**
- 5 Dekton® Countertop Template**
Does not include countertop material, fabrication or installation.

Every kitchen design includes

- Thick Marine Grade Aluminum Construction
- Full Interior & Exterior Powder Coating
- 304 Grade Outdoor Stainless Steel Hardware
- Integrated Self-Leveling Toe Kick
- Removable Access Panels for Simple Connections to Outside Services (plumbing, gas & electrical)
- Rigid Door Structure with Sound Insulated Core & Magnetic Catch System

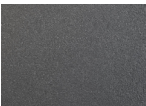
Looking for something else?

See highlights of our Custom Offerings on pages 21-22.

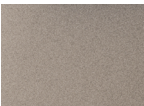
Customization

Finishes

Thick Gauge Marine Grade Aluminum with Interior and Exterior Powder Coating. Matching Powder Coated 304 Stainless Steel Handles.



Anthracite



Clay



Pewter

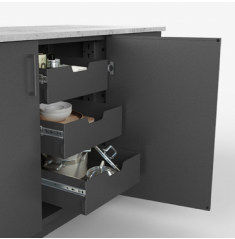
Aesthetic Back Panels

For Installations where the Back of the Kitchen will be Visible. If the kitchen is to be placed against a wall or fence, or will be otherwise hidden from view, aesthetic back panels are unnecessary.

Back panels (S-HORIZON42-BCKP)

Powder Coated Accessories

Easy to add or move within any utility cabinet.



Drawer (S-DR)

Heavy duty retractable drawer. Up to three (3) per utility cabinet.

- 1 Drawer (S-DR-1)
- 2 Drawers (S-DR-2)
- 3 Drawers (S-DR-3)



Shelf (S-SHELF)

Adjustable height shelf. Up to two (2) shelves per utility cabinet.

- 1 Shelf (S-SHELF-1)
- 2 Shelves (S-SHELF-2)



Refuse (S-GBG)

Retractable refuse and recycling kit (shown with drawer DR-21).

- 1 Refuse (S-GBG)
- 1 Drawer & 1 Refuse (S-DR-GBG)

Countertop and equipment shown for aesthetic purposes only. Not included in quote. Images digitally rendered. Actual products may vary.

S-PRAIRIE36



Shown in Pewter with Dekton® Fossil (2cm) and Coyote equipment.

Specifications

Dimensions

*Length **111"**
Depth **28 3/4"**
Height **36 1/2" ± 1"**

*Includes 3/4" countertop nosing. See specifications for details.

- 1 2x Utility Cabinet (21")**
Universal track system. See accessories on page 17 for customization options.
- 2 36" Grill**
Grill and equipment sold separately. See brand and model compatibility chart on page 18 for details.
- 3 Grill Base Cabinet**
For integration with a 36" Grill.
- 4 24" Open Shelf Cabinet**
With IPE hardwood slats.
- 5 Dekton® Countertop Template**
Does not include countertop material, fabrication or installation.

Every kitchen design includes

- Thick Marine Grade Aluminum Construction
- Full Interior & Exterior Powder Coating
- 304 Grade Outdoor Stainless Steel Hardware
- Integrated Self-Leveling Toe Kick
- Removable Access Panels for Simple Connections to Outside Services (plumbing, gas & electrical)
- Rigid Door Structure with Sound Insulated Core & Magnetic Catch System

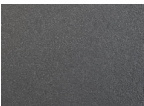
Looking for something else?

See highlights of our Custom Offerings on pages 21-22.

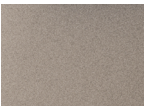
Customization

Finishes

Thick Gauge Marine Grade Aluminum with Interior and Exterior Powder Coating. Matching Powder Coated 304 Stainless Steel Handles.



Anthracite



Clay



Pewter

Aesthetic Back Panels

For Installations where the Back of the Kitchen will be Visible. If the kitchen is to be placed against a wall or fence, or will be otherwise hidden from view, aesthetic back panels are unnecessary.

Back panels (S-PRAIRIE36-BCKP)

Powder Coated Accessories

Easy to add or move within any utility cabinet.



Drawer (S-DR)

Heavy duty retractable drawer. Up to three (3) per utility cabinet.

- 1 Drawer (S-DR-1)
- 2 Drawers (S-DR-2)
- 3 Drawers (S-DR-3)



Shelf (S-SHELF)

Adjustable height shelf. Up to two (2) shelves per utility cabinet.

- 1 Shelf (S-SHELF-1)
- 2 Shelves (S-SHELF-2)



Refuse (S-GBG)

Retractable refuse and recycling kit (shown with drawer DR-21).

- 1 Refuse (S-GBG)
- 1 Drawer & 1 Refuse (S-DR-GBG)

Countertop and equipment shown for aesthetic purposes only. Not included in quote. Images digitally rendered. Actual products may vary.

S-PRAIRIE42



Shown in Anthracite with Dekton® Vera (2cm) and Coyote equipment.

Specifications

Dimensions

*Length **117"**
Depth **28 3/4"**
Height **36 1/2" ± 1"**

*Includes 3/4" countertop nosing. See specifications for details.

- 1 2x Utility Cabinet (21")**
Universal track system. See accessories on page 17 for customization options.
- 2 42" Grill**
Grill and equipment sold separately. See brand and model compatibility chart on page 18 for details.
- 3 Grill Base Cabinet**
For integration with a 42" Grill.
- 4 24" Open Shelf Cabinet**
With IPE hardwood slats.
- 5 Dekton® Countertop Template**
Does not include countertop material, fabrication or installation.

Every kitchen design includes

- Thick Marine Grade Aluminum Construction
- Full Interior & Exterior Powder Coating
- 304 Grade Outdoor Stainless Steel Hardware
- Integrated Self-Leveling Toe Kick
- Removable Access Panels for Simple Connections to Outside Services (plumbing, gas & electrical)
- Rigid Door Structure with Sound Insulated Core & Magnetic Catch System

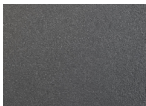
Looking for something else?

See highlights of our Custom Offerings on pages 21-22.

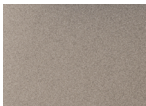
Customization

Finishes

Thick Gauge Marine Grade Aluminum with Interior and Exterior Powder Coating. Matching Powder Coated 304 Stainless Steel Handles.



Anthracite



Clay



Pewter

Aesthetic Back Panels

For Installations where the Back of the Kitchen will be Visible. If the kitchen is to be placed against a wall or fence, or will be otherwise hidden from view, aesthetic back panels are unnecessary.

Back panels (S-PRAIRIE42-BCKP)

Powder Coated Accessories

Easy to add or move within any utility cabinet.



Drawer (S-DR)

Heavy duty retractable drawer. Up to three (3) per utility cabinet.

1 Drawer (S-DR-1)

2 Drawers (S-DR-2)

3 Drawers (S-DR-3)



Shelf (S-SHELF)

Adjustable height shelf. Up to two (2) shelves per utility cabinet.

1 Shelf (S-SHELF-1)

2 Shelves (S-SHELF-2)



Refuse (S-GBG)

Retractable refuse and recycling kit (shown with drawer DR-21).

1 Refuse (S-GBG)

1 Drawer & 1 Refuse (S-DR-GBG)

Countertop and equipment shown for aesthetic purposes only. Not included in quote. Images digitally rendered. Actual products may vary.

S-LAKESHORE36



Shown in Clay with Dekton® Nilium (2cm) and DCS equipment.

Specifications

Dimensions

*Length 132"
Depth 28 3/4"
Height 36 1/2" ± 1"

*Includes 3/4" countertop nosing. See specifications for details.

- 1 2x Utility Cabinet (21")**
Universal track system. See accessories on page 17 for customization options.
- 2 36" Grill**
Grill and equipment sold separately. See brand and model compatibility chart on page 18 for details.
- 3 Grill Base Cabinet**
For integration with a 36" Grill.
- 4 12" Double Side Burner**
- 5 Double Side Burner Cabinet**
For integration with a 12" Double Side Burner.
- 6 24" Open Shelf Cabinet**
With IPE hardwood slats.
- 7 Dekton® Countertop Template**
Does not include countertop material, fabrication or installation.

Every kitchen design includes

- Thick Marine Grade Aluminum Construction
- Full Interior & Exterior Powder Coating
- 304 Grade Outdoor Stainless Steel Hardware
- Integrated Self-Leveling Toe Kick
- Removable Access Panels for Simple Connections to Outside Services (plumbing, gas & electrical)
- Rigid Door Structure with Sound Insulated Core & Magnetic Catch System

Looking for something else?

See highlights of our Custom Offerings on pages 21-22.

Customization

Finishes

Thick Gauge Marine Grade Aluminum with Interior and Exterior Powder Coating. Matching Powder Coated 304 Stainless Steel Handles.



Anthracite



Clay



Pewter

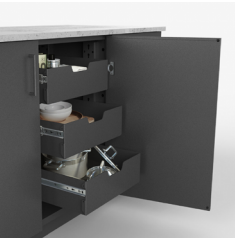
Aesthetic Back Panels

For Installations where the Back of the Kitchen will be Visible. If the kitchen is to be placed against a wall or fence, or will be otherwise hidden from view, aesthetic back panels are unnecessary.

Back panels (S-LAKESHORE36-BCKP)

Powder Coated Accessories

Easy to add or move within any utility cabinet.



Drawer (S-DR)

Heavy duty retractable drawer. Up to three (3) per utility cabinet.

- 1 Drawer (S-DR-1)
- 2 Drawers (S-DR-2)
- 3 Drawers (S-DR-3)



Shelf (S-SHELF)

Adjustable height shelf. Up to two (2) shelves per utility cabinet.

- 1 Shelf (S-SHELF-1)
- 2 Shelves (S-SHELF-2)



Refuse (S-GBG)

Retractable refuse and recycling kit (shown with drawer DR-21).

- 1 Refuse (S-GBG)
- 1 Drawer & 1 Refuse (S-DR-GBG)

Countertop and equipment shown for aesthetic purposes only. Not included in quote. Images digitally rendered. Actual products may vary.

S-LAKESHORE42



Shown in Pewter with Dekton® Fossil (2cm) and Aspire by Hestan equipment.

Specifications

Dimensions

*Length **138"**
Depth **28 3/4"**
Height **36 1/2" ± 1"**

*Includes 3/4" countertop nosing. See specifications for details.

- 1 2x Utility Cabinet (21")**
Universal track system. See accessories on page 17 for customization options.
- 2 42" Grill**
Grill and equipment sold separately. See brand and model compatibility chart on page 18 for details.
- 3 Grill Base Cabinet**
For integration with a 42" Grill.
- 4 12" Double Side Burner**
- 5 Double Side Burner Cabinet**
For integration with a 12" Double Side Burner.
- 6 24" Open Shelf Cabinet**
With IPE hardwood slats.
- 7 Dekton® Countertop Template**
Does not include countertop material, fabrication or installation.

Every kitchen design includes

- Thick Marine Grade Aluminum Construction
- Full Interior & Exterior Powder Coating
- 304 Grade Outdoor Stainless Steel Hardware
- Integrated Self-Leveling Toe Kick
- Removable Access Panels for Simple Connections to Outside Services (plumbing, gas & electrical)
- Rigid Door Structure with Sound Insulated Core & Magnetic Catch System

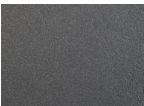
Looking for something else?

See highlights of our Custom Offerings on pages 21-22.

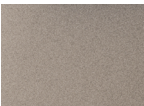
Customization

Finishes

Thick Gauge Marine Grade Aluminum with Interior and Exterior Powder Coating. Matching Powder Coated 304 Stainless Steel Handles.



Anthracite



Clay



Pewter

Aesthetic Back Panels

For Installations where the Back of the Kitchen will be Visible. If the kitchen is to be placed against a wall or fence, or will be otherwise hidden from view, aesthetic back panels are unnecessary.

Back panels (S-LAKESHORE42-BCKP)

Powder Coated Accessories

Easy to add or move within any utility cabinet.



Drawer (S-DR)

Heavy duty retractable drawer. Up to three (3) per utility cabinet.

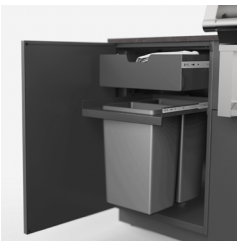
- 1 Drawer (S-DR-1)
- 2 Drawers (S-DR-2)
- 3 Drawers (S-DR-3)



Shelf (S-SHELF)

Adjustable height shelf. Up to two (2) shelves per utility cabinet.

- 1 Shelf (S-SHELF-1)
- 2 Shelves (S-SHELF-2)



Refuse (S-GBG)

Retractable refuse and recycling kit (shown with drawer DR-21).

- 1 Refuse (S-GBG)
- 1 Drawer & 1 Refuse (S-DR-GBG)

Countertop and equipment shown for aesthetic purposes only. Not included in quote. Images digitally rendered. Actual products may vary.

S-SPRING36



Shown in Anthracite with Dekton® Vera (2cm) and Wolf and Subzero equipment.

Specifications

Dimensions

*Length 132"
Depth 28 3/4"
Height 36 1/2" ± 1"

*Includes 3/4" countertop nosing. See specifications for details.

- 1 2x Utility Cabinet (21")**
Universal track system. See accessories on page 17 for customization options.
- 2 36" Grill**
Grill and equipment sold separately. See brand and model compatibility chart on page 18 for details.
- 3 Grill Base Cabinet**
For integration with a 36" Grill.
- 4 12" Double Side Burner**
- 5 Double Side Burner Base Cabinet**
For integration with a 12" Double Side Burner.
- 6 24" Refrigerator**
- 7 Dekton® Countertop Template**
Does not include countertop material, fabrication or installation.

Every kitchen design includes

- Thick Marine Grade Aluminum Construction
- Full Interior & Exterior Powder Coating
- 304 Grade Outdoor Stainless Steel Hardware
- Integrated Self-Leveling Toe Kick
- Removable Access Panels for Simple Connections to Outside Services (plumbing, gas & electrical)
- Rigid Door Structure with Sound Insulated Core & Magnetic Catch System

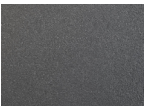
Looking for something else?

See highlights of our Custom Offerings on pages 21-22.

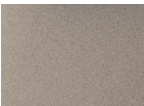
Customization

Finishes

Thick Gauge Marine Grade Aluminum with Interior and Exterior Powder Coating. Matching Powder Coated 304 Stainless Steel Handles.



Anthracite



Clay



Pewter

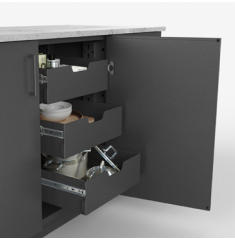
Aesthetic Back Panels

For Installations where the Back of the Kitchen will be Visible. If the kitchen is to be placed against a wall or fence, or will be otherwise hidden from view, aesthetic back panels are unnecessary.

Back panels (S-SPRING36-BCKP)

Powder Coated Accessories

Easy to add or move within any utility cabinet.



Drawer (S-DR)

Heavy duty retractable drawer. Up to three (3) per utility cabinet.

- 1 Drawer (S-DR-1)
- 2 Drawers (S-DR-2)
- 3 Drawers (S-DR-3)



Shelf (S-SHELF)

Adjustable height shelf. Up to two (2) shelves per utility cabinet.

- 1 Shelf (S-SHELF-1)
- 2 Shelves (S-SHELF-2)



Refuse (S-GBG)

Retractable refuse and recycling kit (shown with drawer DR-21).

- 1 Refuse (S-GBG)
- 1 Drawer & 1 Refuse (S-DR-GBG)

Countertop and equipment shown for aesthetic purposes only. Not included in quote. Images digitally rendered. Actual products may vary.

S-SPRING42



Shown in Clay with Dekton® Nilium (2cm) and Wolf and Subzero equipment.

Specifications

Dimensions

*Length 138"
Depth 28 3/4"
Height 36 1/2" ± 1"

*Includes 3/4" countertop nosing. See specifications for details.

- 1 2x Utility Cabinet (21")**
Universal track system. See accessories on page 17 for customization options.
- 2 42" Grill**
Grill and equipment sold separately. See brand and model compatibility chart on page 18 for details.
- 3 Grill Base Cabinet**
For integration with a 42" Grill.
- 4 12" Double Side Burner**
- 5 Double Side Burner Base Cabinet**
For integration with a 12" Double Side Burner.
- 6 24" Refrigerator**
- 7 Dekton® Countertop Template**
Does not include countertop material, fabrication or installation.

Every kitchen design includes

- Thick Marine Grade Aluminum Construction
- Full Interior & Exterior Powder Coating
- 304 Grade Outdoor Stainless Steel Hardware
- Integrated Self-Leveling Toe Kick
- Removable Access Panels for Simple Connections to Outside Services (plumbing, gas & electrical)
- Rigid Door Structure with Sound Insulated Core & Magnetic Catch System

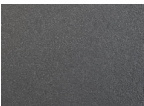
Looking for something else?

See highlights of our Custom Offerings on pages 21-22.

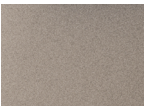
Customization

Finishes

Thick Gauge Marine Grade Aluminum with Interior and Exterior Powder Coating. Matching Powder Coated 304 Stainless Steel Handles.



Anthracite



Clay



Pewter

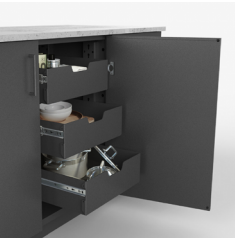
Aesthetic Back Panels

For Installations where the Back of the Kitchen will be Visible. If the kitchen is to be placed against a wall or fence, or will be otherwise hidden from view, aesthetic back panels are unnecessary.

Back panels (S-SPRING42-BCKP)

Powder Coated Accessories

Easy to add or move within any utility cabinet.



Drawer (S-DR)

Heavy duty retractable drawer. Up to three (3) per utility cabinet.

- 1 Drawer (S-DR-1)
- 2 Drawers (S-DR-2)
- 3 Drawers (S-DR-3)



Shelf (S-SHELF)

Adjustable height shelf. Up to two (2) shelves per utility cabinet.

- 1 Shelf (S-SHELF-1)
- 2 Shelves (S-SHELF-2)



Refuse (S-GBG)

Retractable refuse and recycling kit (shown with drawer DR-21).

- 1 Refuse (S-GBG)
- 1 Drawer & 1 Refuse (S-DR-GBG)

Countertop and equipment shown for aesthetic purposes only. Not included in quote. Images digitally rendered. Actual products may vary.

S-CORAL36



Shown in Pewter with Dekton® Fossil (2cm) and Blaze equipment.

Specifications

Dimensions

*Length 135"
Depth 28 3/4"
Height 36 1/2" ± 1"

*Includes 3/4" countertop nosing. See specifications for details.

- 1 2x Utility Cabinet (21")**
Universal track system. See accessories on page 17 for customization options.
- 2 36" Grill**
Grill and equipment sold separately. See brand and model compatibility chart on page 18 for details.
- 3 Grill Base Cabinet**
For integration with a 36" Grill.
- 4 24" Refrigerator**
- 5 Open Shelf Cabinet**
With IPE hardwood slats.
- 6 Dekton® Countertop Template**
Does not include countertop material, fabrication or installation.

Every kitchen design includes

- Thick Marine Grade Aluminum Construction
- Full Interior & Exterior Powder Coating
- 304 Grade Outdoor Stainless Steel Hardware
- Integrated Self-Leveling Toe Kick
- Removable Access Panels for Simple Connections to Outside Services (plumbing, gas & electrical)
- Rigid Door Structure with Sound Insulated Core & Magnetic Catch System

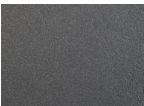
Looking for something else?

See highlights of our Custom Offerings on pages 21-22.

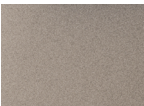
Customization

Finishes

Thick Gauge Marine Grade Aluminum with Interior and Exterior Powder Coating. Matching Powder Coated 304 Stainless Steel Handles.



Anthracite



Clay



Pewter

Aesthetic Back Panels

For Installations where the Back of the Kitchen will be Visible. If the kitchen is to be placed against a wall or fence, or will be otherwise hidden from view, aesthetic back panels are unnecessary.

Back panels (S-CORAL36-BCKP)

Powder Coated Accessories

Easy to add or move within any utility cabinet.



Drawer (S-DR)

Heavy duty retractable drawer. Up to three (3) per utility cabinet.

1 Drawer (S-DR-1)

2 Drawers (S-DR-2)

3 Drawers (S-DR-3)

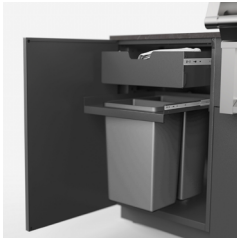


Shelf (S-SHELF)

Adjustable height shelf. Up to two (2) shelves per utility cabinet.

1 Shelf (S-SHELF-1)

2 Shelves (S-SHELF-2)



Refuse (S-GBG)

Retractable refuse and recycling kit (shown with drawer DR-21).

1 Refuse (S-GBG)

1 Drawer & 1 Refuse (S-DR-GBG)

Countertop and equipment shown for aesthetic purposes only. Not included in quote. Images digitally rendered. Actual products may vary.

S-CORAL42



Shown in Anthracite with Dekton® Vera (2cm) and Blaze equipment.

Specifications

Dimensions

*Length **141"**
Depth **28 3/4"**
Height **36 1/2" ± 1"**

*Includes 3/4" countertop nosing. See specifications for details.

- 1 2x Utility Cabinet (21")**
Universal track system. See accessories on page 17 for customization options.
- 2 42" Grill**
Grill and equipment sold separately. See brand and model compatibility chart on page 18 for details.
- 3 Grill Base Cabinet**
For integration with a 42" Grill.
- 4 24" Refrigerator**
- 5 Open Shelf Cabinet**
With IPE hardwood slats.
- 6 Dekton® Countertop Template**
Does not include countertop material, fabrication or installation.

Every kitchen design includes

- Thick Marine Grade Aluminum Construction
- Full Interior & Exterior Powder Coating
- 304 Grade Outdoor Stainless Steel Hardware
- Integrated Self-Leveling Toe Kick
- Removable Access Panels for Simple Connections to Outside Services (plumbing, gas & electrical)
- Rigid Door Structure with Sound Insulated Core & Magnetic Catch System

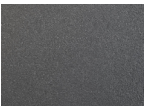
Looking for something else?

See highlights of our Custom Offerings on pages 21-22.

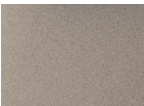
Customization

Finishes

Thick Gauge Marine Grade Aluminum with Interior and Exterior Powder Coating. Matching Powder Coated 304 Stainless Steel Handles.



Anthracite



Clay



Pewter

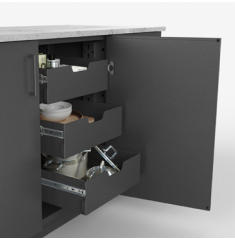
Aesthetic Back Panels

For Installations where the Back of the Kitchen will be Visible. If the kitchen is to be placed against a wall or fence, or will be otherwise hidden from view, aesthetic back panels are unnecessary.

Back panels (S-CORAL42-BCKP)

Powder Coated Accessories

Easy to add or move within any utility cabinet.



Drawer (S-DR)

Heavy duty retractable drawer. Up to three (3) per utility cabinet.

1 Drawer (S-DR-1)

2 Drawers (S-DR-2)

3 Drawers (S-DR-3)



Shelf (S-SHELF)

Adjustable height shelf. Up to two (2) shelves per utility cabinet.

1 Shelf (S-SHELF-1)

2 Shelves (S-SHELF-2)



Refuse (S-GBG)

Retractable refuse and recycling kit (shown with drawer DR-21).

1 Refuse (S-GBG)

1 Drawer & 1 Refuse (S-DR-GBG)

Countertop and equipment shown for aesthetic purposes only. Not included in quote. Images digitally rendered. Actual products may vary.

Powder Coated Accessories

Easy to add or move within any utility cabinet.

Drawer

S-DR Accessory (S-DR-1)

One Heavy Duty Drawer Accessory for the 21" utility cabinet. Compatible with the Universal Track System and can be mounted at various heights. Thick marine grade aluminum construction with Super Durable powder coated finish and all 304 stainless steel hardware.

S-DR Accessory Bundle (S-DR-2)

Two Heavy Duty Drawer Accessory for the 21" utility cabinet. Compatible with the Universal Track System and can be mounted at various heights. Thick marine grade aluminum construction with Super Durable powder coated finish and all 304 stainless steel hardware.

S-DR Accessory Bundle (S-DR-3)

Three Heavy Duty Drawer Accessory for the 21" utility cabinet. Compatible with the Universal Track System and can be mounted at various heights. Thick marine grade aluminum construction with Super Durable powder coated finish and all 304 stainless steel hardware.



Shelf

S-SHELF Accessory (S-SHELF-1)

One Fixed shelf accessory for the 21" utility cabinet. Compatible with the Universal Track System and can be mounted at various heights. Thick marine grade aluminum construction with Super Durable powder coated finish and all 304 stainless steel hardware.

S-SHELF Accessory Bundle (S-SHELF-2)

Two Fixed shelf accessory for the 21" utility cabinet. Compatible with the Universal Track System and can be mounted at various heights. Thick marine grade aluminum construction with Super Durable powder coated finish and all 304 stainless steel hardware.



Refuse

S-DR and S-GBG Accessory Bundle (S-DR-GBG)

Includes one pull out refuse and recycling accessory and one heavy duty drawer accessory. Thick marine grade aluminum construction with Super Durable powder coated finish and all 304 stainless steel hardware.

S-GBG Accessory (S-GBG)

Pull out refuse and recycling accessory for 21" utility cabinet. Includes 2 (18 qt.) plastic bins. Compatible with the Universal Track System and can be mounted at various heights. Thick marine grade aluminum construction with Super Durable powder coated finish and all 304 stainless steel hardware.

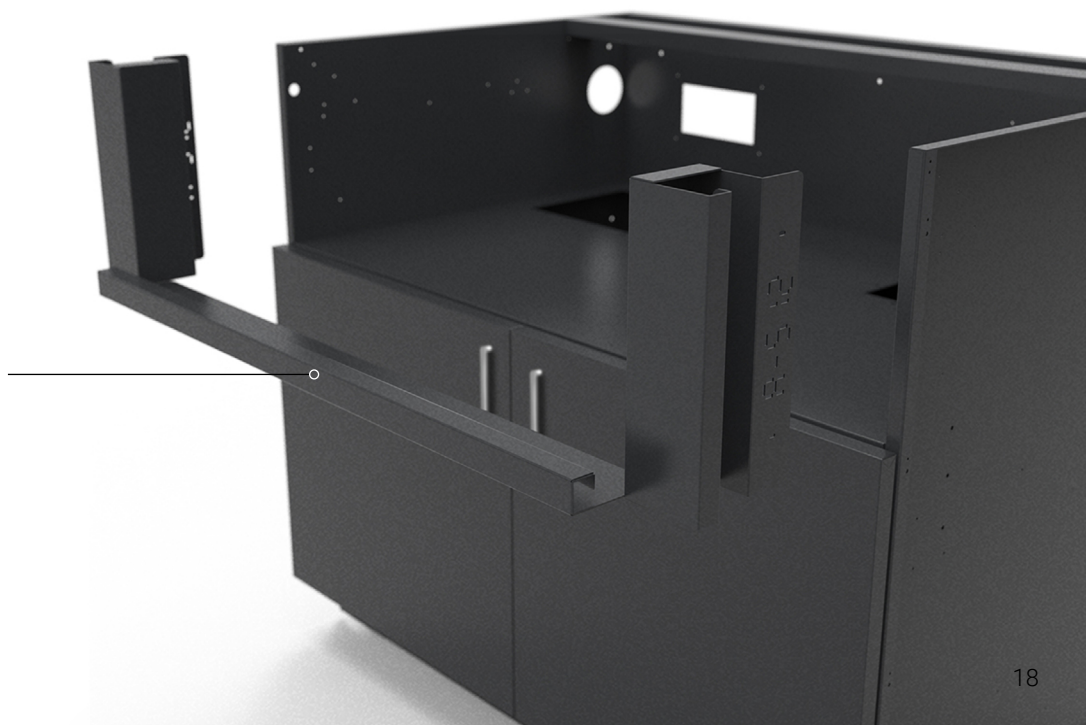


Compatibility






Urban Bonfire's Classics Program was developed for easy compatibility with the following industry leading brands:









Factory produced brand and model specific trim kits ensure a clean and finished look.



Comparison Chart

					Appliances				
	Utility Cabinet	Grill Base Cabinet	Open Shelf Cabinet	Double Side Burner Cabinet	36" Grill	42" Grill	12" Double Side Burner	24" Refrigerator	Length (includes 3/4" countertop nosing)
 S-SIERRA36	●	●			●				87"
 S-SIERRA42	●	●				●			93"
 S-HORIZON36	●	●			●			●	111"
 S-HORIZON42	●	●				●		●	117"
 S-PRAIRIE36	●	●	●		●				111"
 S-PRAIRIE42	●	●	●			●			117"

	Utility Cabinet	Grill Base Cabinet	Open Shelf Cabinet	Double Side Burner Cabinet	Appliances				Length (includes 3/4" countertop nosing)
					36" Grill	42" Grill	12" Double Side Burner	24" Refrigerator	
 <p>S-LAKESHORE36</p>	●	●	●	●	●		●		132"
 <p>S-LAKESHORE42</p>	●	●	●	●		●	●		138"
 <p>S-SPRING36</p>	●	●		●	●		●	●	132"
 <p>S-SPRING42</p>	●	●		●		●	●	●	138"
 <p>S-CORAL36</p>	●	●	●		●			●	135"
 <p>S-CORAL42</p>	●	●	●			●		●	141"

Custom Offering

Urban Bonfire offers a vast selection of cabinets, accessories and finishing options. Our in-house design team will develop custom layouts and configurations for almost any size and style of outdoor kitchen and entertainment space. Please contact us for details or to start a custom project.



Add some greenery to your design with our custom free-standing marine grade aluminum, powder coated planters.



Our powder coated aluminum modular backsplash system offers a gorgeous aesthetic and optional clip-in planter boxes. Great for hanging tools as well.



REQUEST FOR DESIGN

Ready to start planning your new outdoor space?
Kindly use this simple form as a first step.

Dimensions

Lead Contact

Dealer/Company

Date

Client Name

Is the back of your kitchen exposed thus requiring aesthetic finishing back panels?

Yes

No

Some

Equipment Menu

Gas Grill

Brand

Size

Side Burner

Brand

Size

Power Burner

Brand

Size

Refrigeration

Brand

Size

Kamado

Brand

Size

Sink

Brand

Size

Pizza Oven

Brand

Size

Other

Other

Fuel Type

NG

LP

Bulk/Propane

Electric

Other

Accessories to Include

Garbage/Recycling

Drawers

Shelves

Planters

Slatwall Backsplash

Hose

Kamado Rack

Design Options

Powder Coat Color

Artesan

Anthracite

Onyx

Chantilly

Clay

Pewter

Handles

Stainless Steel

Powder Coated Stainless Steel

Urban

Black Bronze

White Bronze

Pull

Black Bronze

White Bronze

Bauhaus

Black Bronze

White Bronze

Countertop Thickness

3/4"

1 1/4"

Other, please specify

Extra Considerations?

Once complete please send request along with any additional design documents (plans, sketches) to design@urbanbonfire.com

Your account manager will confirm receipt.

Thank you.

FOR INTERNAL PURPOSES

Date Received

Account Manager